

sector 111

READ FITTING INSTRUCTIONS IN FULL BEFORE INSTALLATION

This article is sold without warranty expressed or implied. No warranty or representation is made as to this product's ability to protect the user from injury or death. The user assumes that risk. The effectiveness, warranty and longevity of this equipment are directly related to the manner in which it is INSTALLED, USED, and/or MAINTAINED. THE USER ASSUMES THE RISK.

By purchasing this product and opening the packaging, purchasers expressly acknowledge, understand and agree that they take, select and purchase these SECTOR 111 products from SECTOR 111, its affiliates, distributors, and agents (collectively, SECTOR 111) "as is" and "with all faults".

The entire risk as to the quality and performance of these SECTOR 111 parts is with the purchasers. Working on your car can be a dangerous activity. If you are unsure of what you are doing, please leave mechanical or Safety critical work to a skilled mechanic.

We take no responsibility for the incorrect use and/or installation of SECTOR 111 products.

RaceView Carbon Fiber Side View Mirror Installation Instructions

Please read instructions in full BEFORE beginning installation. Installation time: ~1-2 hours

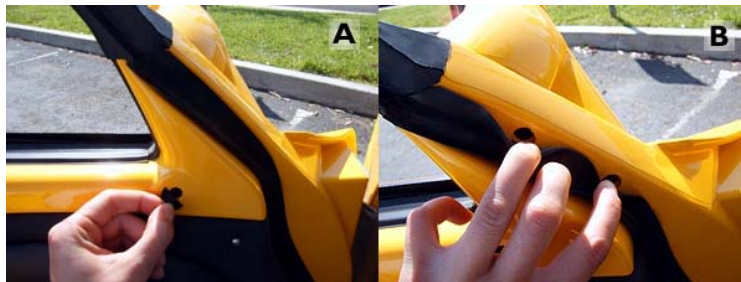
Kit Includes:

- 2 Carbon Fiber Mirrors
- 2 mirror stems
- 2 mirror mounts
- 2 Allen wrenches
- 2 Allen bolts with washers for mirror stems
- 6 M5x10mm Allen bolts for mounting brackets
- 2 M5x12mm Allen bolts for mounting brackets

You will need the following tools:

- 3mm Allen wrench
- 4mm Allen wrench
- 8mm wrench
- 19mm wrench
- Short Phillips head screw driver
- Patience

1. There are three 4mm Allen bolts securing the stock mirrors to the door. To access these bolts, you will need to remove the black sticker covering the hole in figure 1A, and peel back the weather stripping as shown in figure 1B.



2a. Using a 4mm Allen wrench, remove Allen bolts and carefully fish them through the access holes. A long, rounded head Allen wrench is best for this job so that Allen bolts can be accessed from an angle. *Note: On some cars, the bolt behind the access hole in Figure 1A requires a 3mm Allen wrench. A standard head 3mm Allen wrench will suffice. If you drop the bolts in the door, you will have to open the door panel to retrieve them. See step 2b to open the door panel.

2b. Remove Allen bolts on top of door panel. If you have window winders, remove Allen bolt to release winder. With a Phillips screw driver, remove plastic screw on lower right corner of door panel. If you have power windows, you will need to disconnect the power window wiring at this time. Slowly pull lower portion of panel away from door to release Velcro strips on bottom. Slide door panel to left, towards outside of door to release panel from clip on lower left hand side of door.



To access bolts trapped in door, ensure that the window is rolled up. Open plastic and stick your arm inside door as shown in figure 2A. Happy hunting!

3. Using supplied M5x10mm Allen bolts, fit new mirror bracket onto car. You might want to keep the door panel open ☺

Important Note: On some cars, the M5x10mm Allen bolts will be too short in one location on each side. This is due to variability in thickness of the inner door mold. In this instance, use supplied M5x12mm Allen bolt. DO NOT USE 12mm long bolt IF supplied 10mm Allen bolts are long enough. Otherwise, you will dimple the visible side of the mirror base and will be unable to tighten mirror properly to car.



4. To assemble carbon fiber mirrors, remove Allen bolt on end of mirror rod. Push long end of mirror rod inside of mirror as shown in the image below. Tighten on other side of mirror using the Allen bolt that you just removed, and the larger Allen wrench supplied with this kit. DO NOT OVERTIGHTEN, or you risk cracking the clear coat on the mirrors.

5. Screw mirror onto mirror base. Using the 8mm wrench, tighten the nut on the stem when mirror is screwed onto the stem as much as possible.

6. Using the 19mm wrench, while holding onto the mirror, loosen or tighten large nut (shown in image below) in order to adjust mirror alignment. You might want to do this while sitting in your driving position (as leaving the ball too loose for easy adjustment can cause excess vibration on the road). Tighten the ball joint by tightening the nut, then lock into place using the small Allen wrench (included with kit) on the locking stud on the side of the nut.



If you have any questions, please contact us at info@sector111.com or 951-296-6762

